

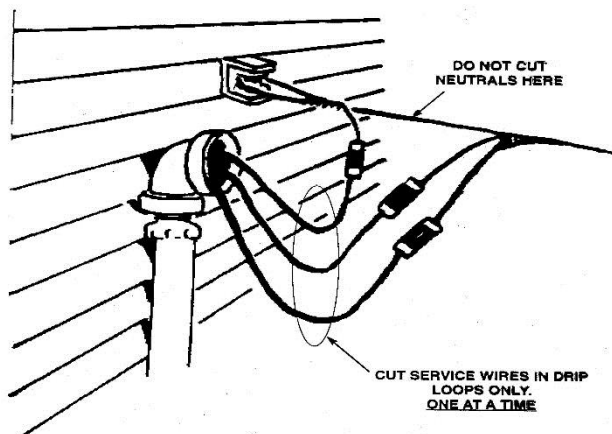
05/14/2019

Electrical interruption Review

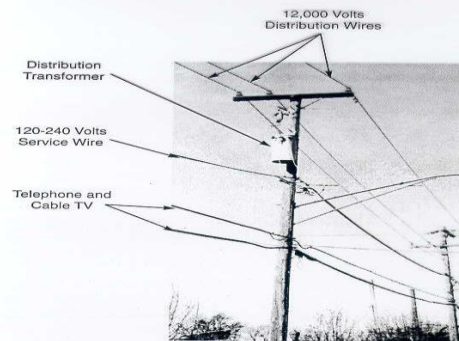
Drip loops have been cut



Drip loop diagram



Standard Construction



Drip loop cutter



This tool is kept on T553. Notice the cutting edge is deep in the "jaw", the wire must be all the way in to successfully cut a drip loop.

Interrupting electrical service at a Residence

- Contact Oncor
- Open (turn off) building's/unit's main disconnect
- Remove meter if necessary
 - Cut meter seal with wire cutters
 - Remove meter-retaining ring
 - Secure Meter Grabber to meter and remove meter with a smooth motion
- And/or cut drip loops after meter removal
- Utilize Voltage Tester to verify power disconnect

Review EFD SOP 260.0